



bike citizens

LEARNING FROM RIDERSHIP DATA

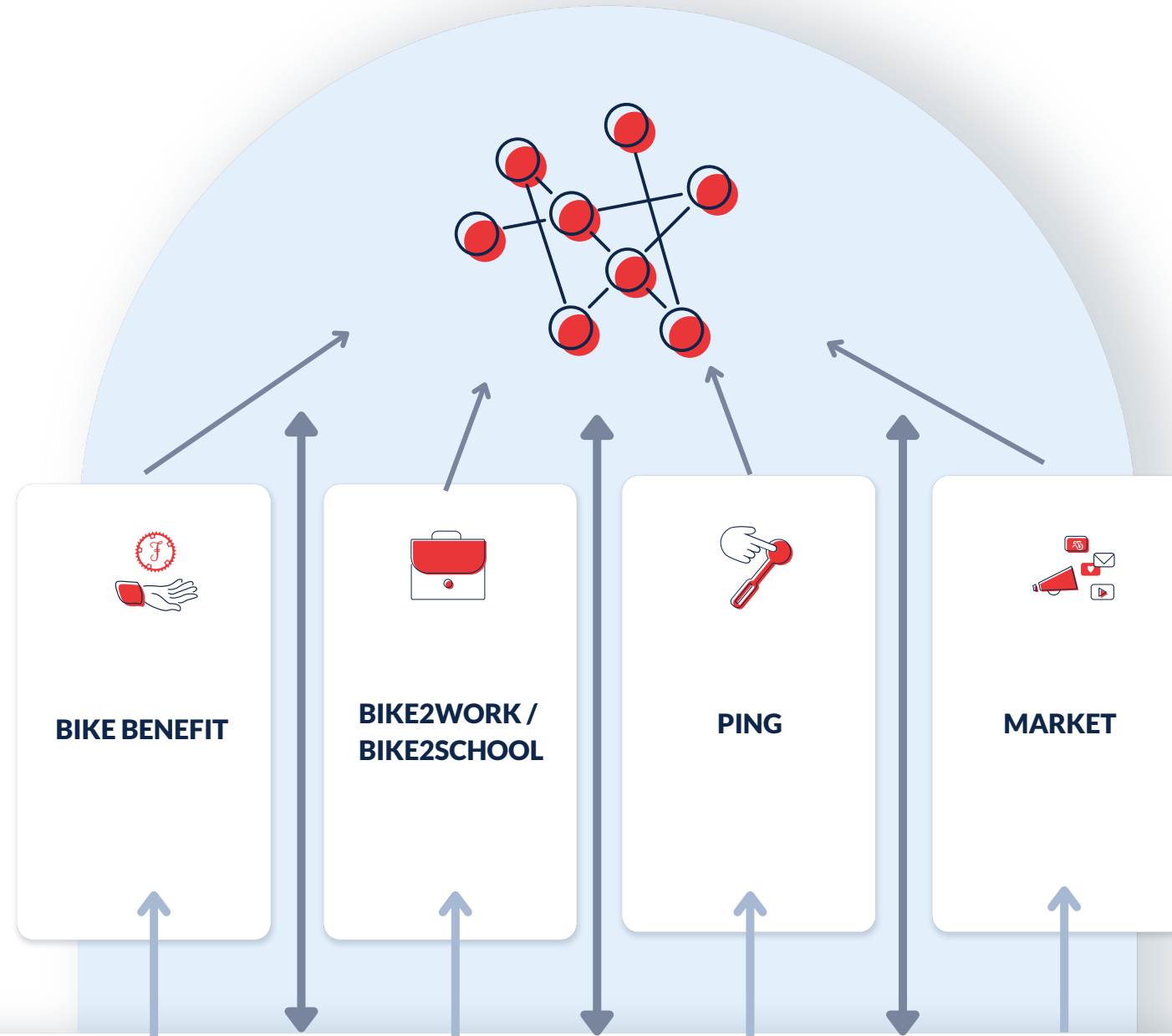




Bike Citizens Cycling Platform

for digital connectivity and cycling mobility

PROMOTION DATA
BASE



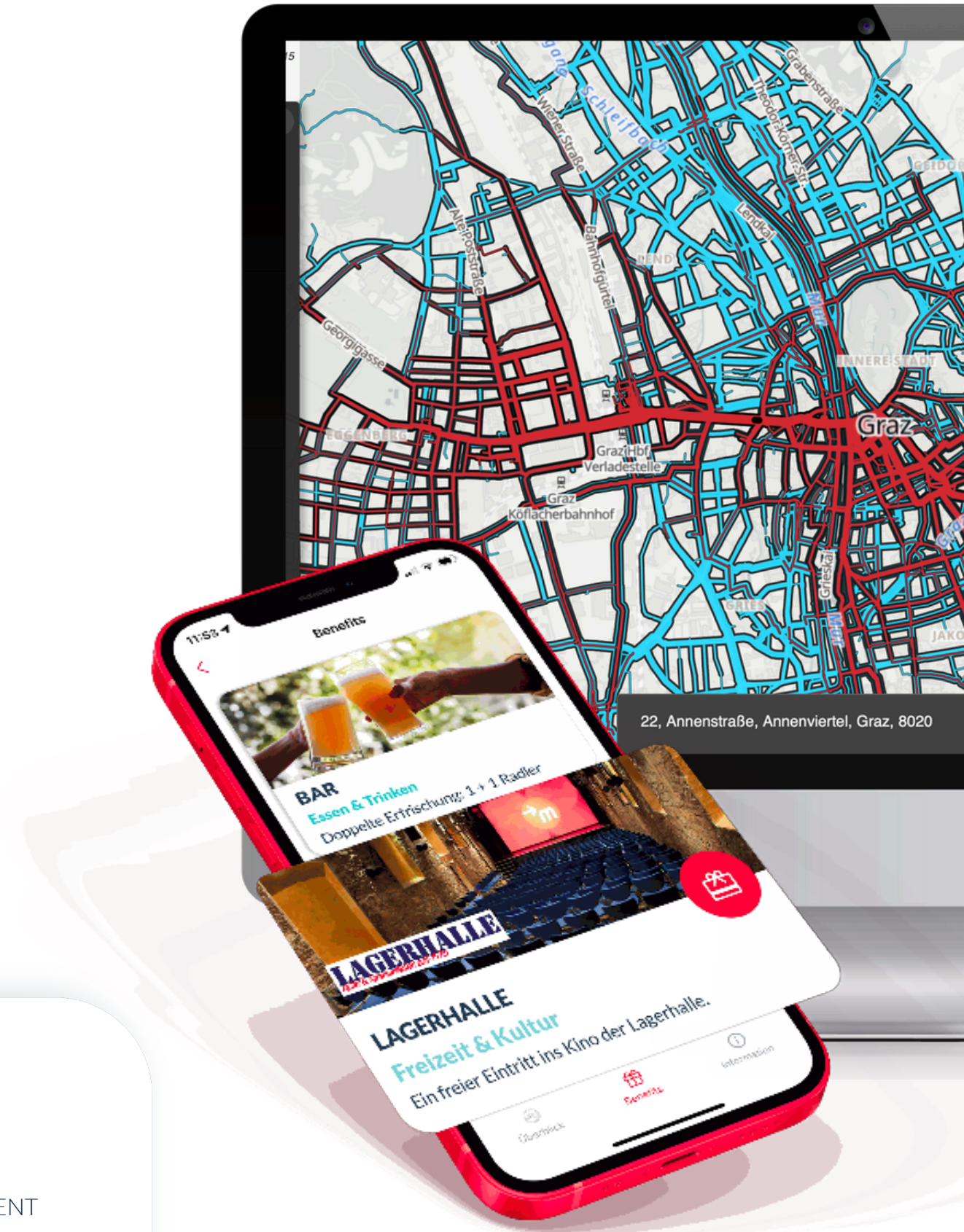
B2C CYCLING PLATFORM WITH B2GOV AND B2B SERVICES & CONTENT



NAVIGATION, TRACKING, TOURS
FREE & PREMIUM

PROFILE & STATS

BRANDING &
CUSTOMIZED CONTENT





Cycling infrastructure

What does it actually look like?



 Dedicated or visibly marked cycling infrastructure

Map data © OpenStreetMap, ODbL



Cycling Data for Planing

Hannover Mittelland Channel



Asphalt statt Schotter: Region Hannover baut Radwege am Mittellandkanal aus

Die Region Hannover will die Radwege am Mittellandkanal außerhalb der Landeshauptstadt asphaltieren und verbreitern. Das Millionenprojekt soll noch in diesem Jahr starten. Für das Gebiet der Stadt Hannover ist ein...

 Hannoversche Allgemeine Zeitung / Jun 8, 2023



Cycling Data for Planning

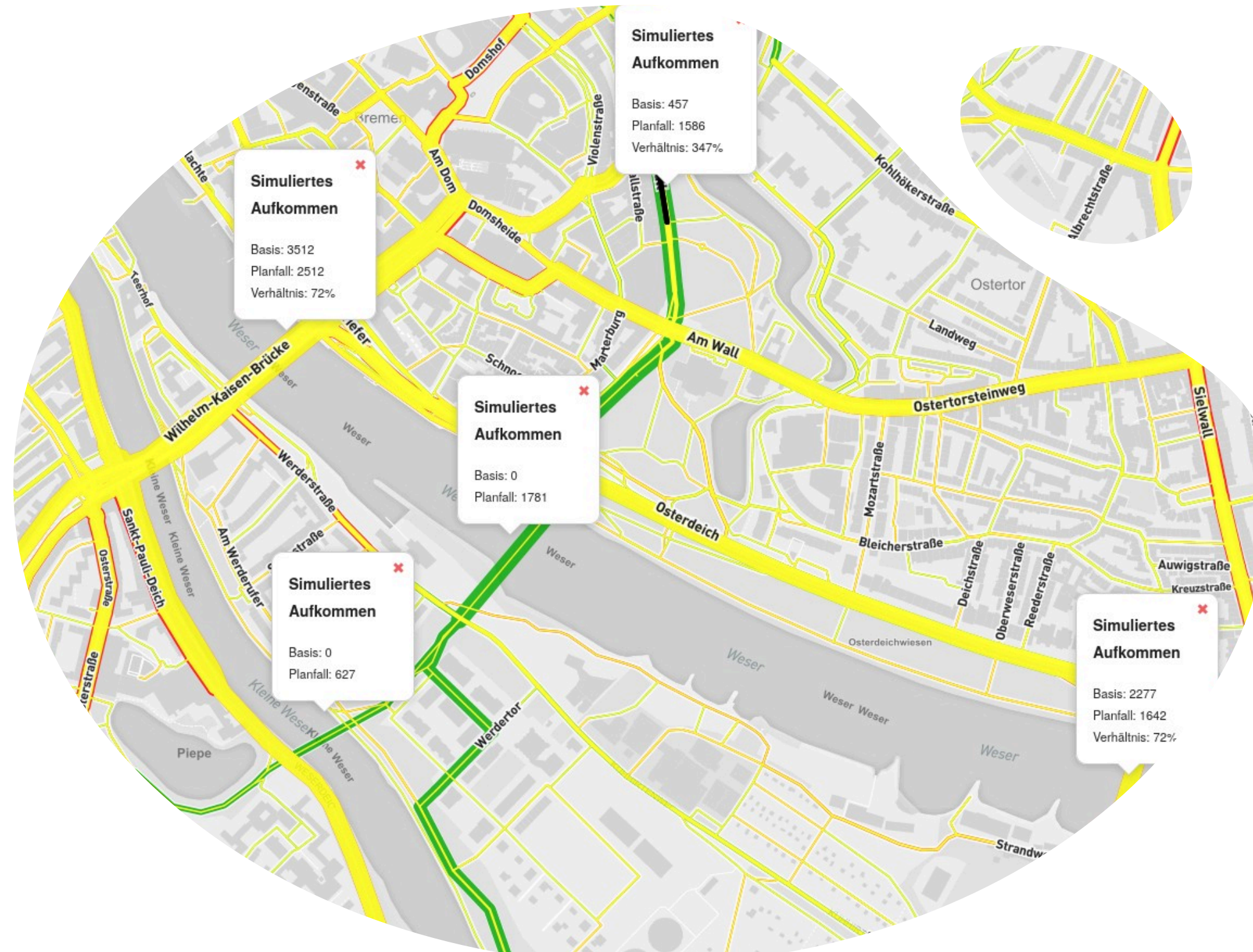
Cycling Streets in Dortmund





Cycling Data for Planning

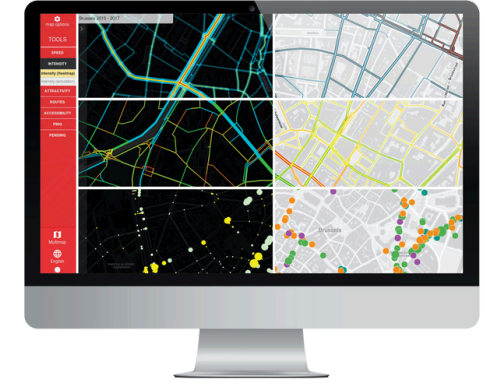
Analysis of Weser crossings in Bremen



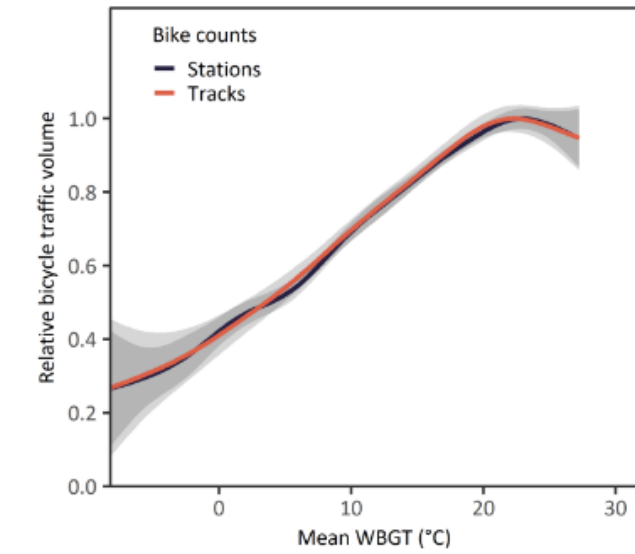


Planning for the Future

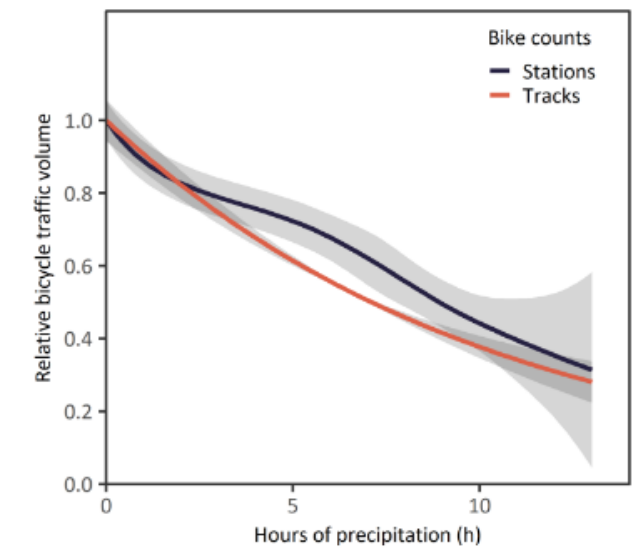
climate-fit.city



a) Effect of variations in WBGT_{mean}



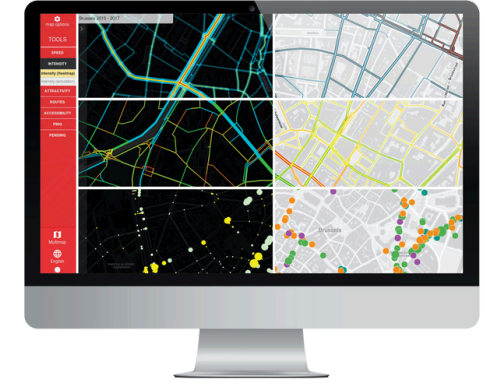
c) Effect of variations in precipitation hours (PRH)



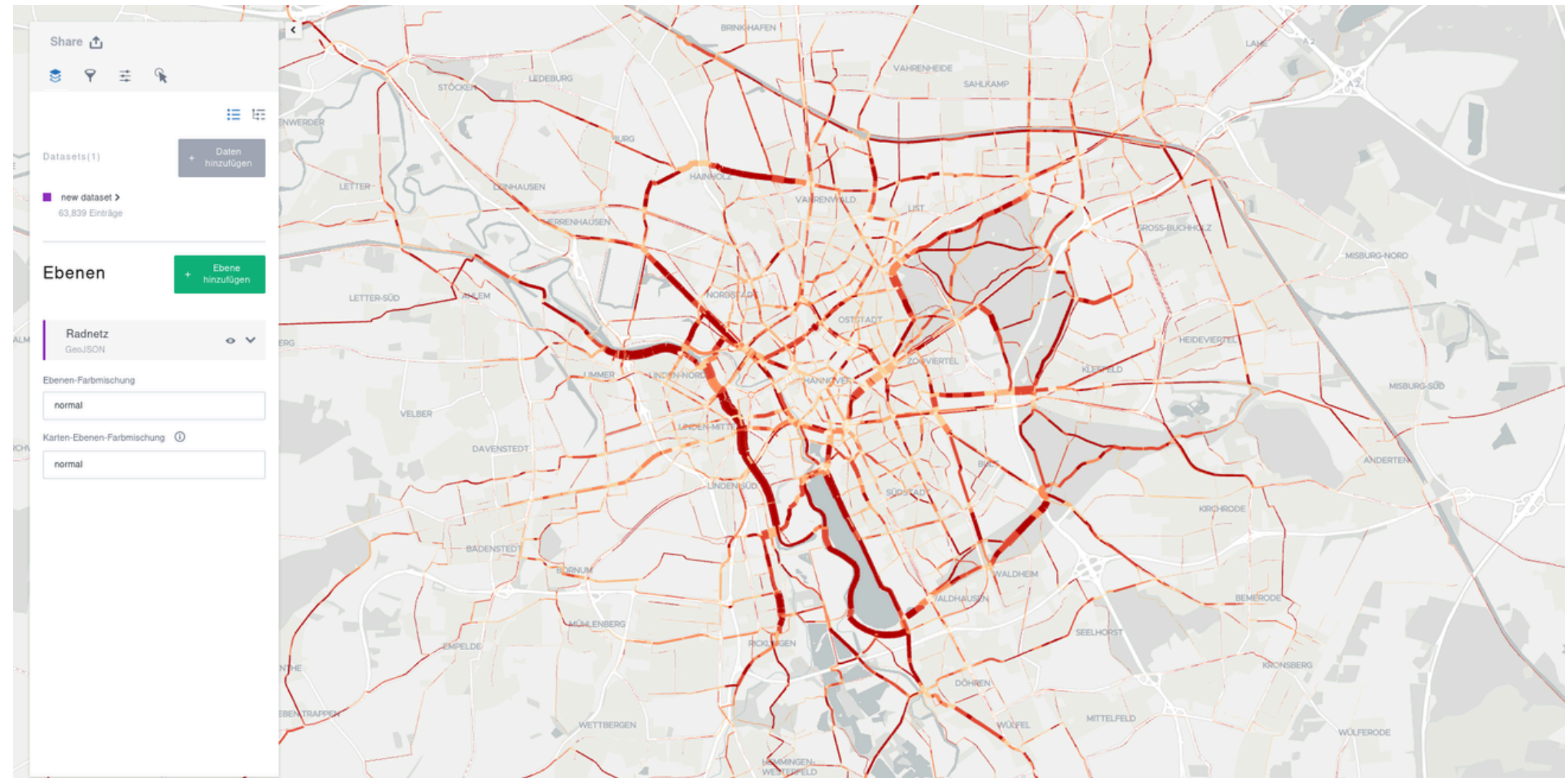
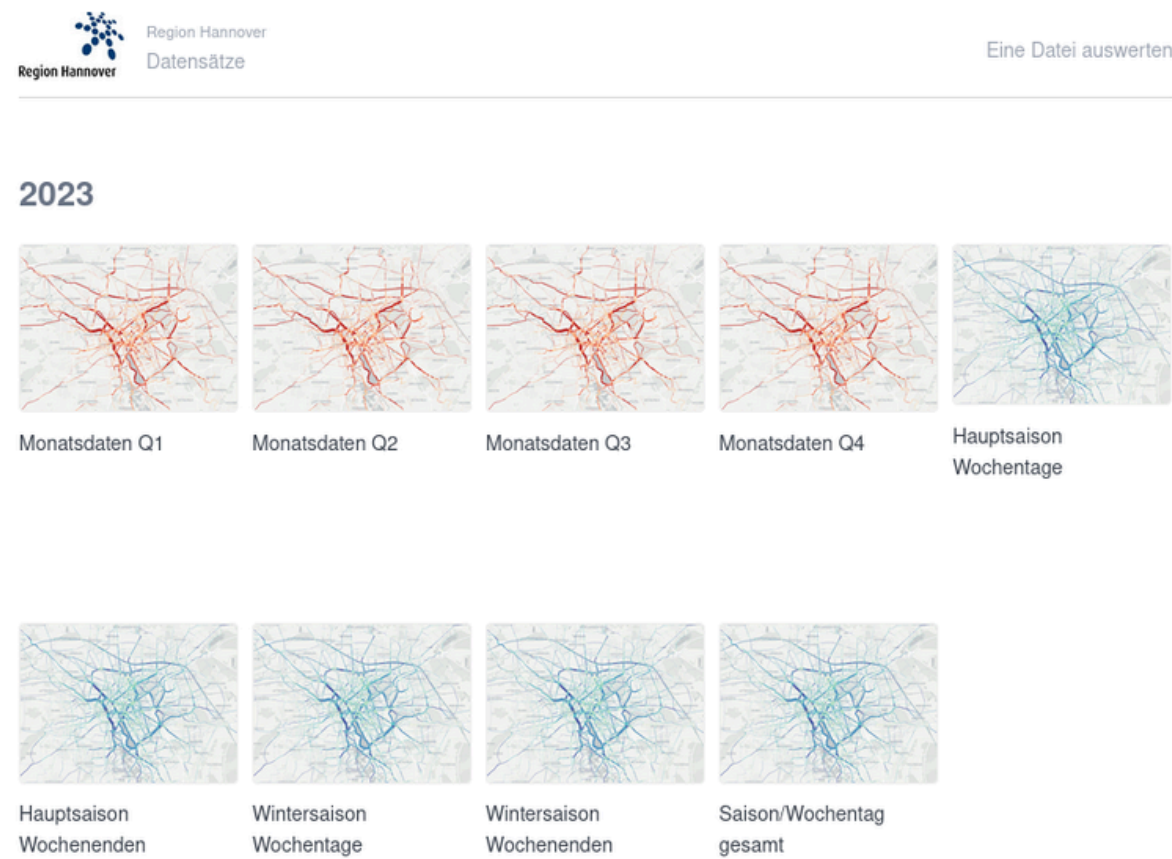


Sharing Data

Bike Citizens Open Data Platform



Available from the beginning of July - <https://opendata.bikecitizens.net>





Get in touch to make cycling digital!



Mihai Ghete

mihai@bikecitizens.net

